



[www.emmausfederation.co.uk](http://www.emmausfederation.co.uk)

# Welcome to Central Class!

*Spring Term One*

Welcome back!

We hope you have had a wonderful Christmas and a happy new year! We are ready to take 2024 on with a super positive attitude! On a Tuesday afternoon, Mrs Baker will be covering my PPA time, and I will not be in school on a Thursday. The class will be taught by Miss Lambe every Thursday alongside Miss Burns and Mrs Osborne, please message the appropriate staff if needed, so that urgent messages are picked up.

## History

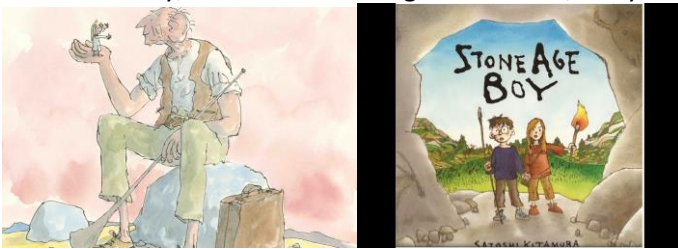
Our new and exciting topic this term (and next!) is 'The Stone Age'. It will be a fantastic term learning all about the Stone Age, the Bronze Age and the Iron Age. We will look at artefacts and what we have learnt throughout history about the Stone Age. I am also hoping to arrange a trip to Flag Fen towards the end of Spring Two, so I will keep you updated about this further into the year.



## Reading and Literacy

We always try to encourage a love of reading as much as possible within school. One way we do this is through text-based writing, which means that we have a book we read together and use in our literacy lessons. To start the term off, we will be looking at 'The Stone Age Boy' by Satoshi Kitamura before moving on to a very well known book called 'The BFG' by Roald Dahl.

Within literacy, we will be focusing on recounts, diary entries, instructions, narrative, and biographies.



Please ensure that your child is reading at home **every** night, as well as recording their reading in their reading records. Children will take AR tests throughout the week with books usually being changed by Wednesday so please ensure these are being brought back into school. Spellings will be sent home on a Friday with homework, spelling tests are the following Friday mornings.

## Maths

This term we are starting off with deepening our knowledge of fractions. We will be working on improper and proper fractions, as well as adding and subtracting fractions. After this, we will move on to decimals. As part of the government scheme, in June 2024, Y4 children will be carrying out a times tables test which we will be starting to practice this year. For this, children need to know all their times tables up to the 12 times tables. Sumdog is an excellent way of practicing this, if you can please ensure your children are using this that would help a lot. If you have any problems with Sumdog, please let me know.

## Science

In Science, we are moving on to a new topic all about Rocks. We will be thinking about – how rocks are formed, different types of rocks, fossils and lots more. We will continue to experiment in Science using lots of exciting resources.

## P.E

Within P.E. this term, we shall be focusing on dance on a ...(TBC)... , and another curriculum area with JB Sports on a **Friday** afternoon. Please ensure your child comes to school with their PE kit on those days if they are not keeping them in school, although we encourage PE kits to be left in school now. Please also ensure that your child does not wear earrings and that long hair is tied up on PE days.

## Key Information

- Please ensure that children are bringing in the correct PE kit on the relevant days.
- I'm not in school on a Thursday, so please message Miss Lambe should you need to that day.
- Central will begin swimming after the next half term (February), more information will come out soon.

It will be an exciting and busy term, lots of fun things to look forward to!

Many Thanks,  
Central team 😊

---

Swineshead St Mary's Church of England Primary School, Abbey Road, Swineshead, Boston, Lincs, PE20 3EN Tel: 01205 820356

Sutterton Fourfields Church of England Primary School Park Avenue, Sutterton, Boston, Lincs, PE20 2JN Tel: 01205 460547

